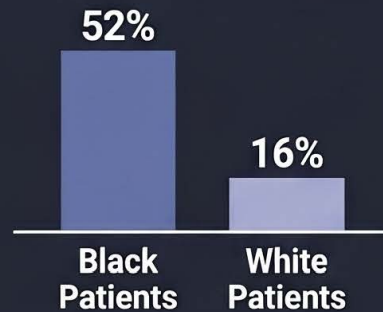


AI & Dermoscopy: Closing the Diagnostic Gap in Skin of Color

Bridging the equity gap in dermatology through data-driven precision.

52% vs. 16% late-stage melanoma diagnosis

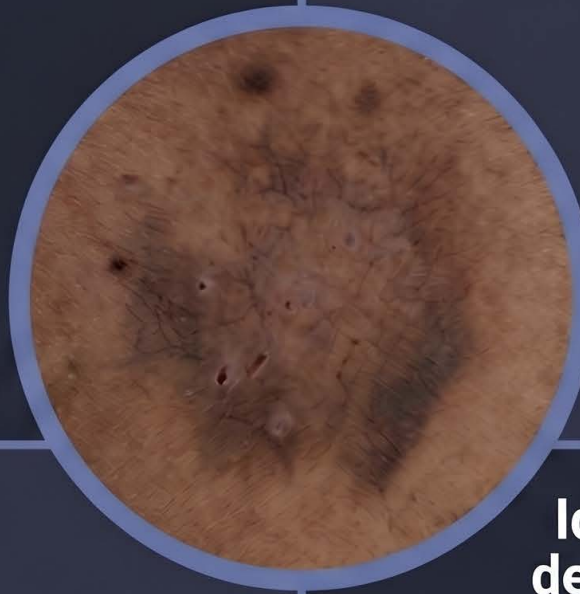


Black patients are diagnosed at advanced stages significantly more often than White patients.

Use AI as a clinical adjunct

63.4%
Sensitivity
(Without AI)

86.1%
Sensitivity
(With AI-assisted
dermoscopy)



AI accuracy drops in dark skin



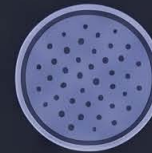
70% accuracy
(Lighter Skin)



17% accuracy
(Fitzpatrick Type VI)

Accuracy can plummet from 70% in lighter skin to 17% for Fitzpatrick Type VI due to training bias.

Identify SOC-specific dermoscopic features



Eccrine
pigmentation



Reticular patterns
with central
hyperpigmentation